



MS DURHAM LOLLYPOP EX-93 2E
DAM OF LOT 71

Lot 71



LUCAS MOSER
394 S OSBORN RD
DANSVILLE, MI 48819
517-623-6861

MISS SOUTHERN-EDGE WB LOLA-ET

70948162
Born: June 4, 2012
2-03 Milking 100 lbs/day 4.4%F - 3.5%P SCC 40

Fresh: September 26, 2014

Gillette Windbrook-ETS

CAN 7816429 EX-93-CAN EXTRA'10 *TY *TY
PTA +589M +48F +29P 98R 8/14
PTA +0.5PL 2.95SCS -1.8DPR 6.3%DCE
PTA +3.31T +2.40UDC +3.07FLC 98R 8/14
GTPI +1929G

Ms Durham Lollypop

138273031 Excellent-93 EEEEE 2E
5-05 2x 365d 26680 4.9 1303 3.4 920
3-07 2x 365d 24060 3.6 876 3.5 756
1-11 2x 365d 18880 3.7 699 4.4 828

Gillette Brilea F B I-ET

CAN 8209524 EX-94-CAN EXTRA '05 *TV *TL *TY
PTA +1446M +39F +34P 99R 8/14
PTA +1.88T +1.29UDC +1.57FLC GTPI +1763G

Gillette Blitz 2nd Wind-ET

CAN 7352248 VG-88-CAN *34 STAR
2-02 3x 365d 39096 3.6 1422 3.0 1182

Regancrest Elton Durham-ET

2250783 Excellent-90 GM 8/01 *TR *CV *TL
PTA -281M -33F +5P 99R 8/14
PTA +2.45T +2.18UDC +2.06FLC GTPI +1566G

Lylehaven Gibson Lilac

135046504 Excellent-91 EEVEV @ 4-05
3-00 2x 365d 28220 4.9 1369 3.7 1042
4-03 2x 337d 27100 4.8 1308 3.5 959
1-11 2x 336d 22830 4.6 1039 3.3 761

• HM All-American Pring Yrlg Heifer 2005
Sired by Silky Gibson-ET

3rd Dam

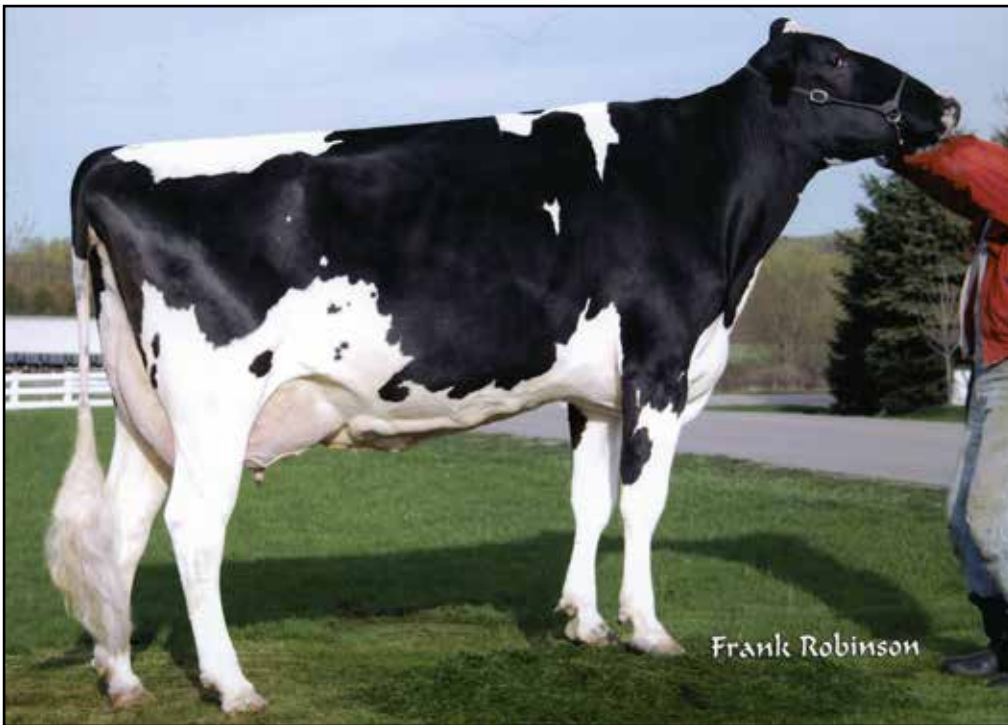
Lylehaven Lavender-ET VG-88 VEVVV
5-02 2x 365d 28530 4.4 1259 3.2 912

4th Dam

Thiersant Lili Starbuck-ET EX-94 5E *2 STAR
9-11 2x 365d 30910 4.5 1385 3.3 1023
Life: 3428d 238806 4.7 11291 3.2 7673

5th Dam

Ivyhall Astro Jet Ronie VG-86-6YR-CAN *1 STAR
5-04 2x 305d 18472 4.2 769 3.1 578
• 1st 5-Yr-Old Cow Sorel 1993



ANDREW ITO TRINIDAD EX-91 2E
DAM OF LOT 72



BAILEE, LAUREN & TAYLOR WHITEHEAD
5024 LONG HIGHWAY Z
CONWAY, MO 65632
417-268-7693

INKA!

- Int Champion Missouri State Fair 2014
- Grand Champion Missouri State Fair Jr Show 2014
- Jr Champion Missouri State Fair 2012

Regancrest S Braxton-ET

61898423 Excellent-95 *TR *TV *TL *TY *TD
PTA +1552M +12F +18P 99R 8/14
PTA -3.1PL 3.00SCS -4.4DPR 5.9%DCE
PTA +3.58T +1.95UDC +2.31FLC 99R 8/14
GTPI +1513G

Andrew Ito Trinidad

51446659 Excellent-91 EEEVE 2E
3-05 3x 365d 39000 4.0 1549 3.1 1198
6-08 2x 305d 26920 3.4 905 2.9 789
2-04 2x 352d 23360 3.5 808 3.2 741
Life: 1626d 141370 4.1 5746 3.1 4326

HBD-JONS BRAXTON INKA-ET

69741494 Very Good-88 EX-MS @ 3-09
Born: September 26, 2010
2-06 2x 365d 24190 3.6 860 3.1 748'
3-09 2x Milking 79 lbs/day SCC 20

Fresh: July 16, 2014

Full sister to Inka

Jons-HBD Braxton Izzie

- Junior Champion KS All-Breeds Junior Show 2012
- HM Junior Champion GA National Fair 2012

Maternal sister to Inka

Jons-HBD Calculate Index-ET VG-85 VG-MS - 2 Yrs.

Picston Shottle-ET

GBR 598172 EX-95-GBR GM 12/11 *TV *TL
PTA +859M +44F +23P 99R 8/14
PTA +2.25T +1.84UDC +1.55FLC GTPI +1912G

Regancrest-PR Barbie-ET

60602011 Excellent-92 EEEEE GMD DOM *TV
2-06 2x 365d 31690 3.9 1237 3.3 1050
• HM All-American Jr 3-Yr-Old Cow 2004

Barbee-M Juror Ito-ET

2287161 Excellent-90 GM 8/04 *TV *TL
PTA +287M +2F +1P 99R 8/14
PTA +.63T +.93UDC -.46UDC GTPI +1548G

Andrew Emory Trifle

50502777 Very Good-87 VG-MS
6-10 2x 344d 26780 3.5 950 2.8 744
7-11 2x 365d 26240 3.2 830 3.0 780
3-02 2x 365d 22630 3.3 753 3.0 674
4-05 2x 344d 21490 3.5 761 3.0 648
Life: 2115d 134110 3.4 4566 2.9 3932



SKAGVALE MIRACLE ELLEE EX-91
DAM OF LOT 73

Lot 73



ELF SYNDICATE
PO BOX 266
BASEHOR, KS 66007

Maternal sister to Elf-ET

Claquato-RH Elicit-ET

- Nom All-American Sr 2-Yr-Old Cow 2013
- 3rd Sr 2-Yr-Old Cow International Show 2013
- 3rd Winter Yrlg Heifer Internation Show 2012
- Sold for 42,500.00

Mr Chassity Gold Chip-ET

140145553 Excellent-92 *TR *TV *TL *TY *TD
PTA +105M +22F -5P 77R 8/14
PTA +2.5PL 2.55SCS -0.2DPR 3.2%DCE
PTA +3.63T +3.37UDC +3.44FLC 97R 8/14
GTPI +1965G

Skagvale Miracle Ellee

135430628 Excellent-91 EEEEE @ 4-04
3-10 2x 365d 26660 3.8 1003 3.3 886
2-00 3x 365d 26550 3.6 965 3.5 925
• 9th Generation Excellent

CLAQUATO-RH ELF-ET

71317484

Born: December 3, 2012

Full sister to Elf

Claquato-RH Eve-ET

- 1st Winter Yrlg IN & KY State Fairs 2014
- Entered 2014 Royal Winter Fair

Braedale Goldwyn

CAN 10705608 GP-CAN GM 12/11 *TV *TL
PTA -42M +29F +12P 99R 8/14
PTA +2.81T +2.47UDC +2.34FLC GTPI +1863G

Regancrest S Chassity-ET

62496899 Excellent-92 EEEVE GMD DOM *TL *TY
3-10 2x 365d 42280 4.3 1798 2.5 1070
Life: 1071d 105520 4.2 4383 2.8 2959

Comestar Lee-ET

CAN 5757117 EX-CAN GM 8/03 *TV *TL
PTA -506M +19F -6P 99R 8/14
PTA +1.18T +.66UDV +.97FLC GTPI +1356G

Skagvale Milan Elie Gay-ET

128055535 Excellent-92 EEEEE 2E
4-11 2x 343d 26060 3.6 941 3.1 814
3-03 2x 365d 24650 3.9 972 3.3 813
2-01 2x 358d 21350 3.6 764 3.4 716

Maternal sisters to Elf-ET

Claquato-RH Escape-ET VG-89 @ 2-Yrs.

- Reserve All-Canadian Sr Calf 2010
- Nominated All-American Fall Calf 2010
- HM All-Canadian Sr Yrlg Heifer 2011
- Nom All-American Fall Yrlg Heifer 2011
- Sold for \$32,000 as Yearling Heifer

Ms Ellee Armani Elysia-ET

- Jr Champion NY State Fair 2014
- 2nd Fall Calf International Holstein Show 2014

3rd thru 9th Dams

Skagvale Country Elie Gay EX-95 EEEEE

5-08 3x 365d 34240 3.7 1283 3.3 1142
Life: 1569d 117320 3.6 4281 3.4 3982

Skagvale Elie Gay-ET EX-93 EEEE 3E

6-01 2x 365d 30210 3.9 1171 3.2 979
Life: 2502d 164460 4.0 6659 3.4 5579

Skagvale Maple Gay EX-95 EEEE 4E GMD

11-3 2x 365d 27320 3.9 1057 3.1 855
Life: 2990d 156120 3.8 5957 3.1 3204

Skagvale Gay Rockette EX-93 4E GMD

Life: 3636d 218810 3.6 7975

Skagvale Delightful Gay EX-90

Life: 4678d 236850 4.1 9670

Skagvale Netherland Gay EX-90 3E

Life: 12 Lact 191641 3.8 7374

Puget Sound Netherland Grace EX-93 3E

Life: 11 Lact 217546 3.5 7544